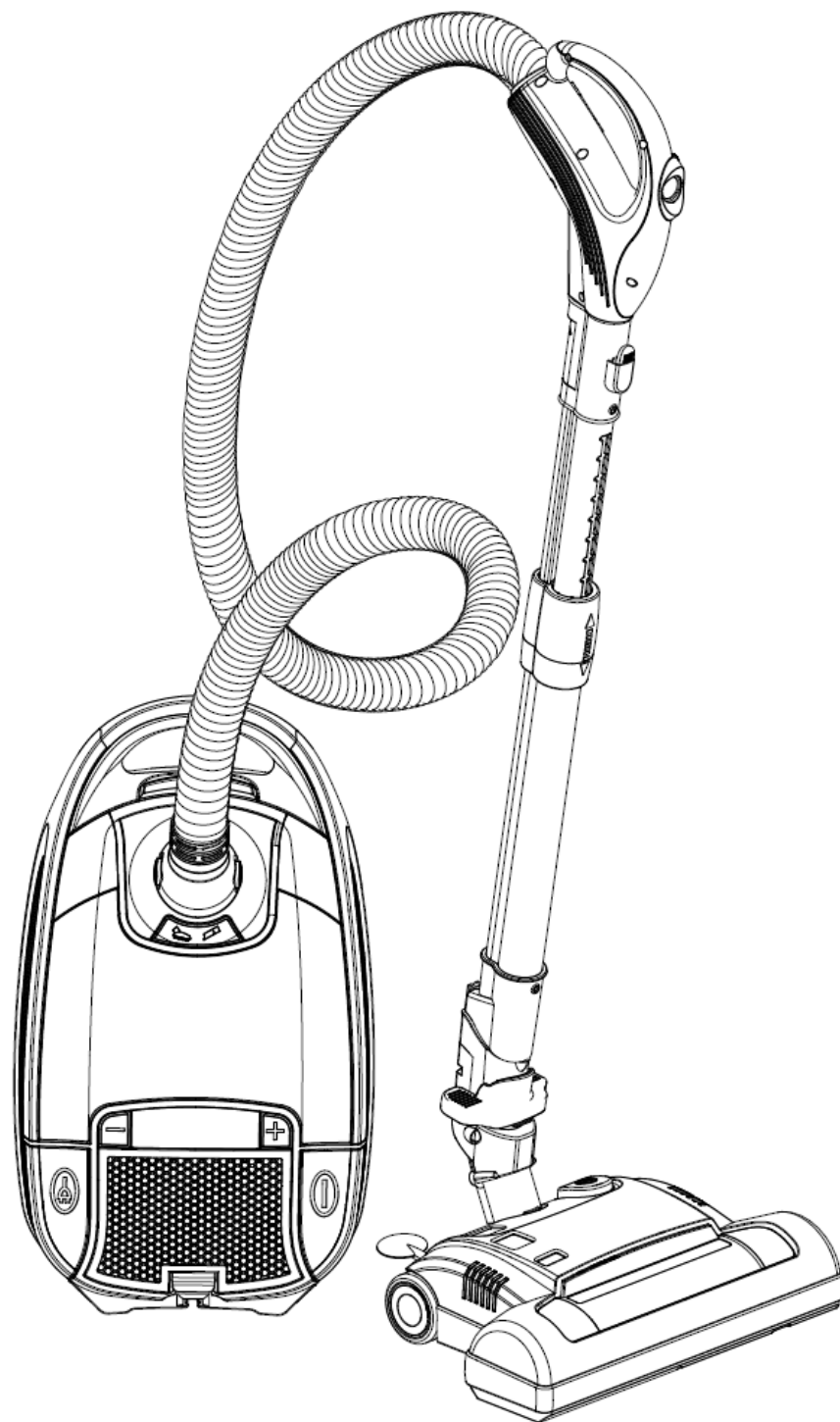




## Owner's Guide

### Powerhead Canister Vacuum Cleaner



# INDEX

1. Important Safety Instructions
2. Components & Accessories
3. Assembly
4. How to Operate
  - a. On/Off Switch
  - b. Check bag indicator
  - c. Variable suction control
  - d. Polarized plug
  - e. Thermal protector
5. Cleaning
6. Maintenance
  - a. Filter bag replacement
  - b. Filters
    - i. Secondary filter
    - ii. Exhaust filter
  - c. Power Nozzle Maintenance
    - i. Belt Replacement
7. Troubleshooting
8. Warranty

# 1. IMPORTANT SAFETY INSTRUCTIONS

## READ ALL INSTRUCTIONS BEFORE USING THIS APPLIANCE

**WARNING! Shock Hazard:** Always switch off and unplug the vacuum cleaner from the electrical outlet before assembling, opening or replacing the filter bag, or before connecting/disconnecting the attachments.

**CAUTION! Suction Hazard:** This vacuum cleaner is a very powerful unit. Before plugging the cord into the electrical outlet, make sure the vacuum is “off”. Hold the vacuum cleaner firmly when starting and in use.

When using the vacuum cleaner, basic safety precautions should always be observed, including the following.

**WARNING – To reduce the risk of fire, electric shock or injury:**

1. Always fully extend the power cord before use.
2. Do not use outdoors or on wet surfaces.
3. Do not handle the plug or vacuum cleaner with wet hands.
4. Do not leave appliance when plugged in. Unplug from the outlet when not in use and before servicing.
5. Turn off the vacuum cleaner before disconnecting or connecting from the main electrical supply.
6. Always unplug the vacuum cleaner before connecting or disconnecting the vacuum hose or accessories and turn off the on/off switch before unplugging the vacuum cleaner.
7. Do not allow to be used as a toy. Close attention is necessary when used by or near children.
8. This appliance is not intended for use by children or persons with reduced physical, sensory or mental capabilities, or lack of experience and knowledge, unless they have been given supervision or instruction concerning the use of the appliance by a person responsible for their safety.

9. Use only as described in this manual. Use only manufacturer's recommended attachments.
10. Do not use with damaged cord or plug. If appliance is not working as it should, has been dropped, damaged, left outdoors or dropped into water, return it to a service center.
11. Do not unplug by pulling on the cord. To unplug, grasp the plug, not the cord.
12. Do not pull or carry by the cord or the hose. Do not use the cord or the hose as a handle, close a door on the cord or the hose, or pull the cord or the hose around sharp edges or corners. Do not run the vacuum cleaner over the cord. Keep the cord away from heated surfaces.
13. Do not unnecessarily obstruct any openings of the vacuum cleaner as this may cause the unit to not work properly or may damage the unit. Do not use with any openings blocked and do not restrict airflow. Keep all openings free of dust, lint, hair or anything that might reduce airflow.
14. Keep hair, loose clothing, fingers and all body parts away from openings and moving parts.
15. Do not vacuum anything that is burning or smoking, such as cigarettes, matches, or hot ashes.
16. Do not vacuum flammable or combustible materials (lighter fluid, gasoline, kerosene etc.) or use in the presence of explosive liquids or vapors.
17. Do not vacuum any liquids.
18. Do not vacuum harmful or toxic liquids (chlorine, bleach, ammonia, drain cleaner etc.)
19. Do not vacuum hard or sharp objects such as glass, nails, screws, coins etc.
20. Do not use without ALL of the filters in place.
21. Take extra care when vacuuming on stairs.
22. Keep vacuuming area well lit.

23. Store the vacuum cleaner in a cool, dry area.

24. Only use approved 13 amp extension cords. Non - approved cords may overheat. Care should be taken to arrange the cord so that the cord cannot be tripped over.

## SAVE THESE INSTRUCTIONS!

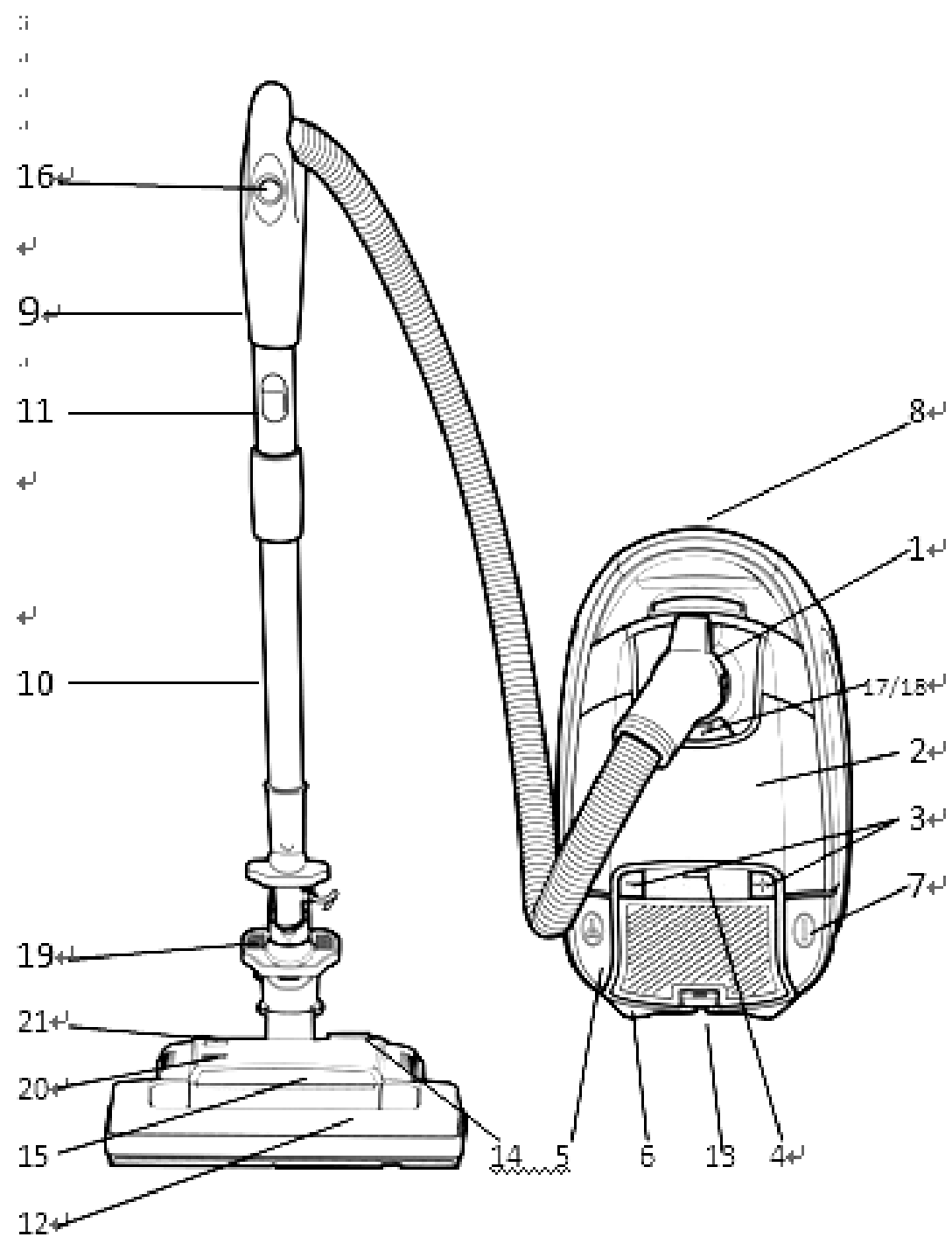
**IMPORTANT:** The motor is equipped with a thermal protector. If, for any reason, the vacuum cleaner should overheat, the thermal protector will automatically turn the unit off. Should this occur, unplug the vacuum cleaner from the electrical outlet and turn off the switch. Remove the filter bag if full. Clean the filters. Allow the vacuum cleaner to cool for approximately one (1) hour. To restart, plug into an electrical outlet and switch back on.

### *Other Consumer Safety Information*

This appliance is intended for household use only.

**WARNING! Shock Hazard:** This appliance has a polarized plug (one wide blade) that reduces the risk of electric shock. The plug fits only one way into a polarized outlet. Do not defeat the safety purpose of the plug by modifying the plug in any way or by using an adapter. If the plug does not fit fully into the outlet, reverse the plug. If it still does not fit, have an electrician replace the outlet.

## 2. Components & Accessories ↵

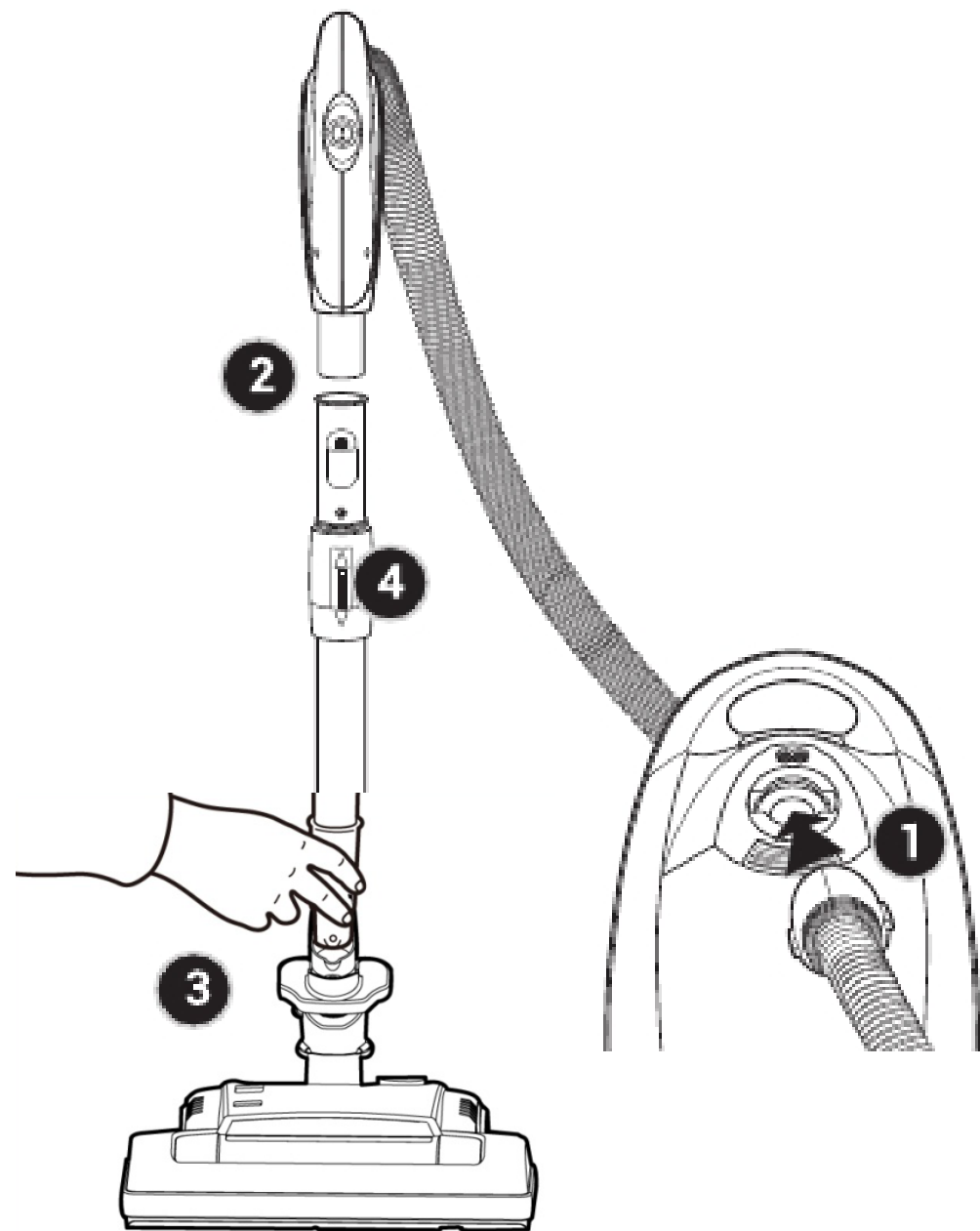


- |                               |                               |
|-------------------------------|-------------------------------|
| 1. Intake                     | 13. Filter cover release      |
| 2. Top cover (conceals tools) | 14. Brush roll on/off pedal   |
| 3. Variable suction control   | 15. Headlight                 |
| 4. Bag full indicator         | 16. Brush roll on/off switch  |
| 5. Cord winder pedal          | 17. Tool lid latch            |
| 6. Power cord                 | 18. Bag lid latch             |
| 7. Power On/Off pedal         | 19. Nozzle release latch      |
| 8. Carry handle               | 20. Overload protection reset |
| 9. Handle with hose           | 21. Carpet height indicator   |
| 10. Telescopic wand           |                               |
| 11. Wand release latch        |                               |
| 12. Power nozzle              |                               |

### 3. Assembly

1. Connect hose by firmly inserting end of hose into canister intake opening.
2. Firmly press handle nozzle into telescopic wand until it locks.
3. Insert telescopic wand into power nozzle.
4. Extend telescopic wand by holding telescopic wand length adjustment and pulling power handle

Note: Accessory tools can be used with the telescopic wand or handle alone.



## 4. How to Operate

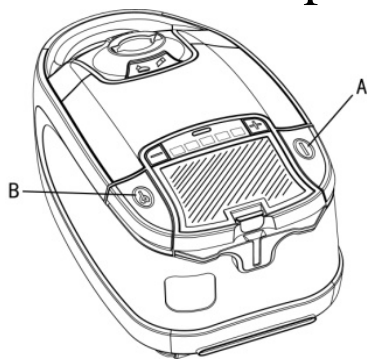


Fig. 4.1



Fig. 4.2

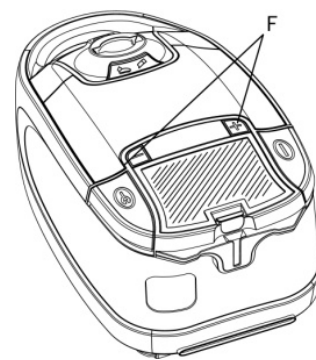


Fig. 4.3

A. On/Off Switch (Fig. 4.1) After assembling vacuum, plug the cord into an electrical outlet. Turn the vacuum ON by pressing the ON/OFF pedal, (A). Turn vacuum OFF by pressing the pedal again.

Note: The cord winder pedal, (B), is on the other side of the canister vacuum. Do not pull the cord any further than the yellow mark on the power cord. This is the maximum safe length. Do NOT pull the power cord past the red mark on the cord. This may disable the retraction mechanism for the cord.

B. Check Bag Indicator (Fig 4.2) When the indicator light comes on, (C), open the canister and check the filter bag. See page 10 for details and instructions on how to replace a filter bag.

C. Variable Suction Control (Fig. 4.3) The variable suction control, (D), is located on the top rear of the canister. Push the (-), button to reduce the suction and to clean lightly soiled areas or delicate fabrics. Push the, (+), button for maximum cleaning power in heavily soiled areas.

E. Polarized Plug – To reduce the risk of electric shock, this vacuum has a polarized plug; one blade is larger than the other. This plug will fit in a polarized outlet only one way. If the plug does not fit, reverse the plug. If it still does not fit, contact a qualified electrician to install the proper outlet. **IMPORTANT:** Do not change the plug in any way.

F. Thermal Protector – An internal thermal protector has been used in this vacuum to prevent overheating. If the nozzle is blocked and the vacuum overheats the thermal protector will trip and the vacuum will stop running. If this happens, turn the vacuum OFF and disconnect the vacuum from the electrical outlet. Then disconnect the nozzle and remove the obstruction. Within one hour the thermal protector will cool and automatically reset. Once the thermal protector reset the vacuum will work properly again. If the vacuum still does not work, allow for additional time to cool.



## 5. Cleaning

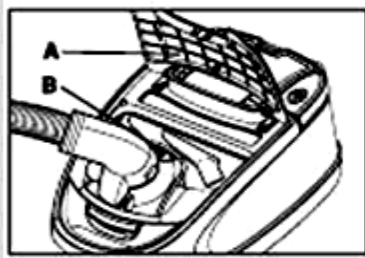


Fig. 5.1

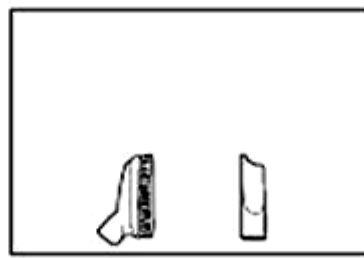


Fig. 5.2



Fig. 5.3

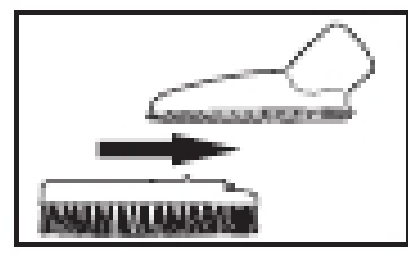


Fig. 5.4

**Cleaning Tool Storage** – The cleaning tools are conveniently stored in the cleaner underneath the tool lid, Fig. 5.1, (A). Push the tool lid release latch to open, (B). The cleaning tools have many uses. Select the tool best suited for the cleaning task from the following descriptions.

**Select the Proper Tool** – Fig. 5.1, The Combination tool, (A), may be used for carved furniture, table tops, lighting fixtures, venetian blinds and heating registers. It may also be used for upholstered furniture, and draperies. Slide the combination tool apart to reveal the second tool, Fig 5.4. The crevice tool, (B), may be used in tight spaces, corners and along edges.

**Attaching Tools** – Fig. 5.3, Tools may be attached directly to the hand grip or to the wand. Firmly push tool into the hand grip or wand. Twist tool slightly to tighten or lessen connection.

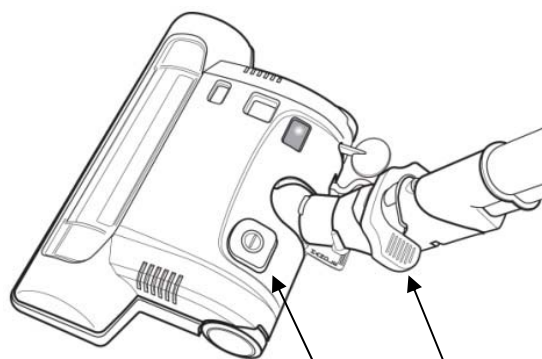
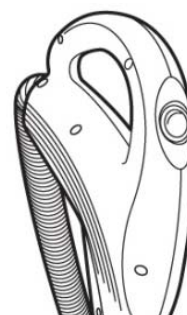
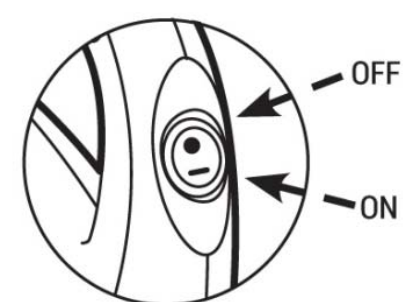


Fig. 5.5

A C



B



### Power Nozzle

- a. **On/Off** – The power nozzle can be turned on by pressing the black button on the top left of the power nozzle with your foot, Fig. 5.5, (A). Press again to turn off. The power nozzle can also be turned on and off by using the toggle button on the top of the handle, Fig. 5.5, (B)
- b. **Handle Position** - The handle has 2 positions when used with the power nozzle. To lower handle to operating position, place your foot firmly on the gray tab at the base of the wand. The tab is labeled “Handle Release”. Then gently lower the handle. To put handle in the upright position, return the handle to the vertical position until the base clicks and the handle will not lower any more. Fig. 5.5, (C).

## Floor Surface Selector

- a. Carpet or Rug Cleaning - When using the power nozzle for carpet and rug cleaning, turn the power nozzle on. This provides the suction and agitator action necessary to deep clean carpets.
- b. Hard Surface Floor Cleaning – To set the power nozzle for hard surface floor cleaning, turn the power nozzle off. This setting provides suction without the risk of scratching bare floors.
- c. Carpet Height Adjustor – The power nozzle has a carpet height adjustor to raise or lower the nozzle head based on the type of carpet being vacuumed. Press the round foot pedal to adjust the carpet height from the lowest setting, 1 to the highest setting, 6. It is recommended the longer the carpet pile, the higher the setting. The carpet setting can be seen in the small window on the top of the power nozzle, Fig. 5.6.

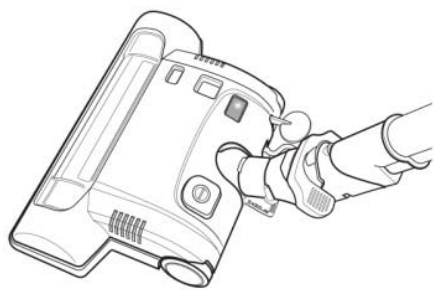


Fig. 5.6

## 6. Maintenance

- a. Filter Bag Replacement – When to Replace, Check the filter bag when the full bag indicator light shows red. When the filter bag is filled with dirt, the cleaner will not operate efficiently. Discard the used filter bag and replace with a new one.

**IMPORTANT:** Disconnect vacuum from electrical outlet before changing filter

### How to Replace

Fig. 6.1

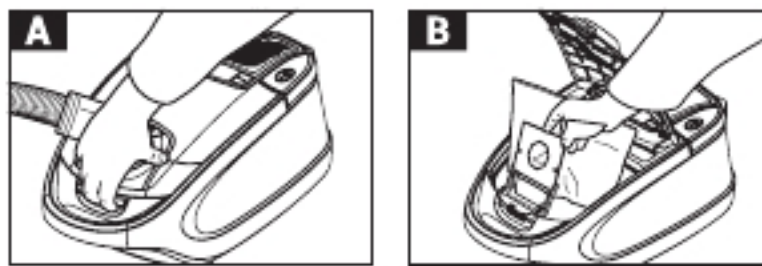
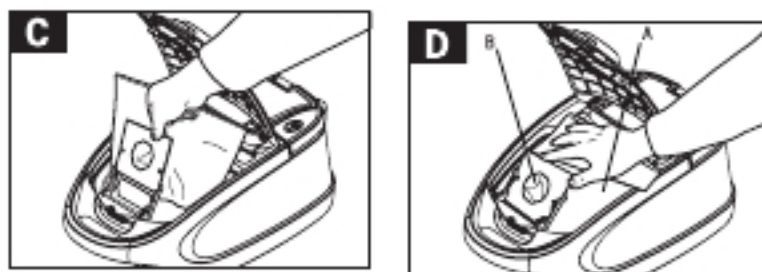


Fig. 6.2



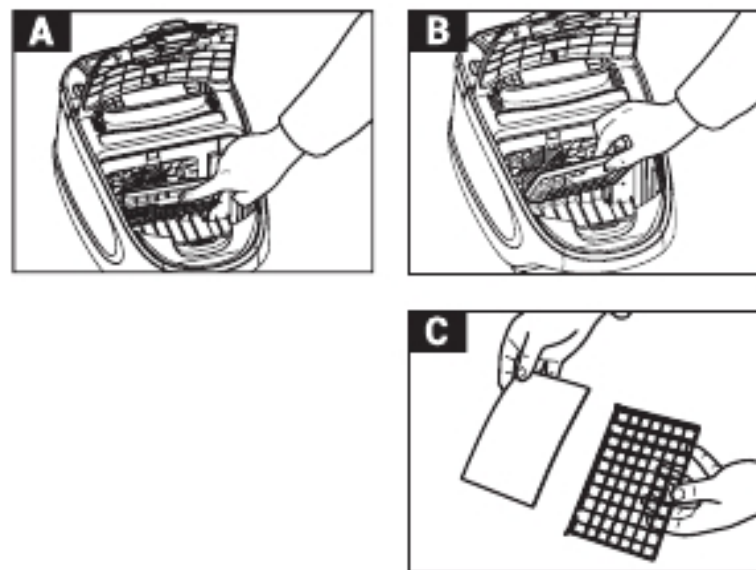
Rotate hose to the side, lift bag lid latch and open bag lid, Fig 6.1, (A). Carefully pull out the used bag, (B).

Form the new filter bag into a box-like shape. Slide bag collar firmly into the holder, Fig 6.2, (C). Push the rear edge of the bag into the bag cavity below seat, (D-A). Clear the bag opening, (D-B), by pushing the pierced paper through opening toward bag interior. Close bag lid. Note, the bag lid will not close without a filter bag in place.

#### b. Filters

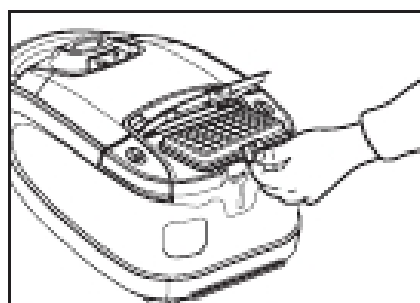
**Secondary Filter** – The secondary can be cleaned or replaced. It is located behind the grill in the bag compartment, Fig 6.3, A & B. This filter protects the motor from dirt particles. If the filter becomes dirty, pull off the grill and lift out the filter, Fig. 6.3, C. Wash the filter in warm water or replace with a new one. Allow the filter to completely dry before putting it into the vacuum. Do not operate the cleaner without the secondary filter in place.

Fig. 6.3



**Exhaust Filter** – How to replace – The high efficient exhaust aids in the filtration process to return clean air to the room. To remove this filter, open the grill located at the back, unstrap the filter latch and pull the filter out, Fig 6.3, D. Replace with a new filter.

Fig. 6.3 D



c. Power Nozzle Maintenance

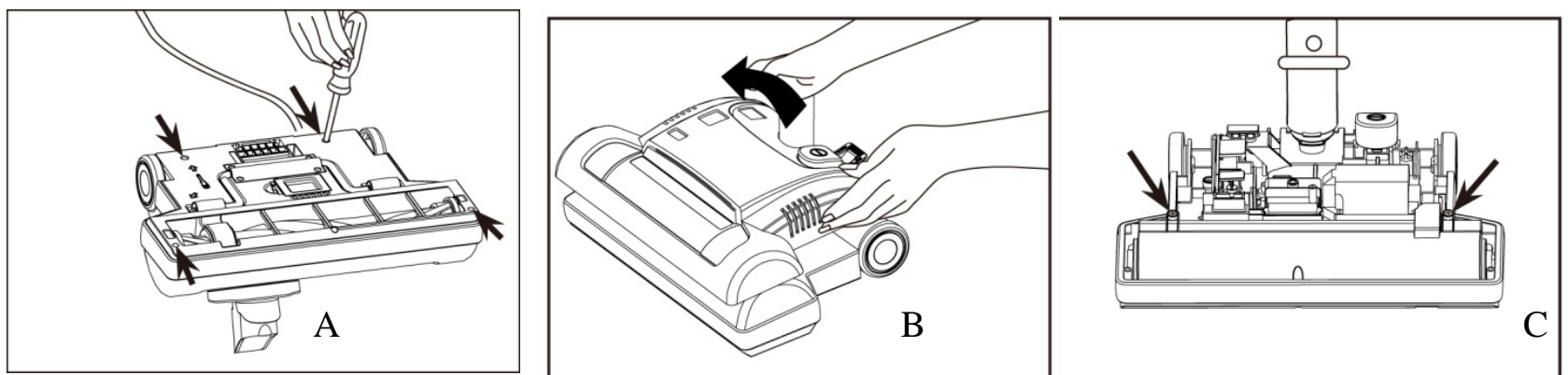
**Belt Replacement** - The belt in your power nozzle drives the brush roll. It has been designed specifically for use in this cleaner and is important for effective operation.

**How to replace** - Fig. 6.4 – Disconnect power nozzle from extension wand.

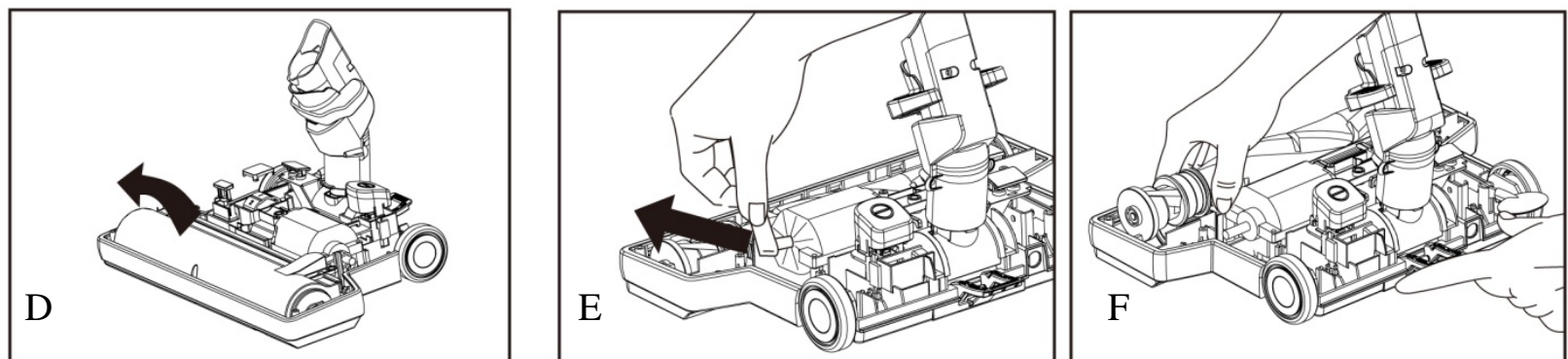
To remove hood, turn nozzle over and unscrew the recessed Phillips head screws, Fig A, Return nozzle to original position and lift off hood, Fig B.

Remove brush roll cover by removing the 3 Phillips head screws, Fig. C.

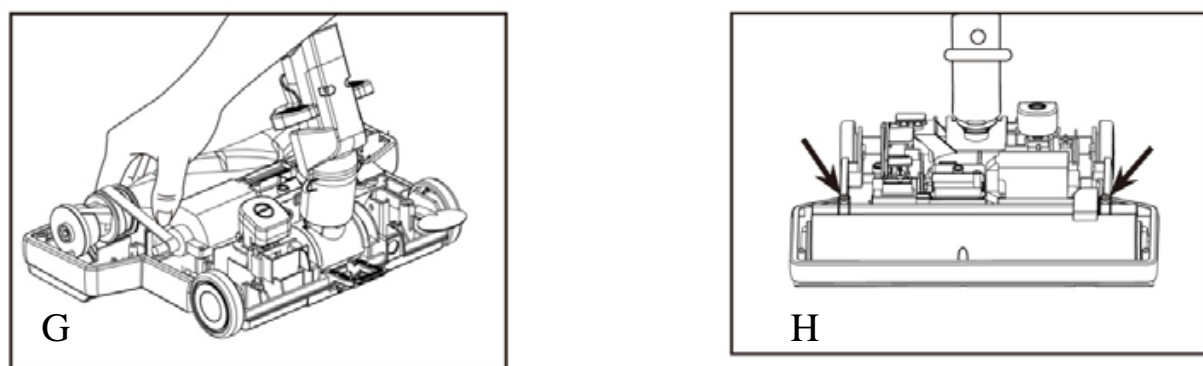
Fig. 6.4



Lift off brush roll cover, Fig D. If belt is not broken but is stretched or cut, pull it off the motor pulley, Fig. E. Lift up end of brush roll. Remove old belt from brush roll pulley, Fig F, and replace with new belt. Lettering on belt must be visible. Stretch belt back and attach to motor pulley.



Hold opposite end of brush roll in place. Push belt end forward, rotating end plate, Fig. G, until it slides in place. Turn brush roll, making sure it rotates freely. Replace brush roll cover, Fig H, over brush roll. Replace 3 short screws. Position hood on top of nozzle base. Turn nozzle over. Replace 2 short screws at the back of nozzle and 2 long screws at the front.



## 7. Troubleshooting

Problem	Possible cause	Possible solution
The device does not work	<ol style="list-style-type: none"> <li>1. The plug is not properly plugged in the wall socket.</li> <li>2. There is no current coming from the wall socket.</li> </ol>	<ol style="list-style-type: none"> <li>1. Put the plug into the wall socket.</li> <li>2. Check whole home fuse/breaker. See if fuse needs to be replaced.</li> </ol>
Dust is coming from the vacuum.	<ol style="list-style-type: none"> <li>1. The filter bag is not installed correctly.</li> <li>2. The filter bag is full.</li> <li>3. The hose is not installed correctly.</li> </ol>	<ol style="list-style-type: none"> <li>1. Fit the filter bag as described in the <i>Maintenance</i> section of the manual.</li> <li>2. Change the filter bag.</li> <li>3. Fit the hose just as described in the <i>Assembly</i> section of the manual.</li> </ol>
The power cord automatically rolls up.	The roll - up mechanism may be defective.	Pull the power cord in and out a number of times. Refer to <i>How to Operate</i> section of manual.
The power cord cannot be pulled out.	The power cord may be entangled.	Carefully pull the cord back and forth a number of times and push the button for rolling up the power cord.
The power cord is not fully wound.	The power cord may be entangled	Pull the power cord out some length (no further than the yellow mark).
The flexible hose and accessories don't pick up any dirt.	<ol style="list-style-type: none"> <li>1. The filter bag is full.</li> <li>2. One or more filters are clogged</li> <li>3. The hose is blocked.</li> </ol>	<ol style="list-style-type: none"> <li>1. Change the filter bag.</li> <li>2. Clean the filter(s).</li> <li>3. Check whether there is a blockage and remove it</li> </ol>
The vacuum cleaner has no or very weak suction power.	<ol style="list-style-type: none"> <li>1. The filters may be clogged.</li> <li>2. Filter bag is full.</li> <li>3. Passage of the hose or mouth - piece is clogged.</li> </ol>	<ol style="list-style-type: none"> <li>1. Clean filter just as described in the <i>Maintenance</i> section.</li> <li>2. Change the filter bag and clean the filter by tapping it against a trash can until clean.</li> <li>3. Check whether there is a blockage and remove it</li> </ol>

## 8. Warranty

What this limited warranty covers:

We warrants that your model VC439 vacuum, for a period of one year from you date of purchase will be free from all defects in material and workmanship for normal household use in accordance with the Owner's Manual. This limited warranty is granted only to the original purchaser.

This limited warranty is subject to the following provisions.

What this limited warranty does not cover:

- Expenses related to pick up, delivery or house calls.
- Parts of the cleaner that require replacement under normal use, such as disposable filter bags, filters, drive belts, light bulbs, and brushroll bristles.
- Damages or malfunctions caused by accidents, acts of God, negligence, abuse, or use not in accordance with the Owner's Manual.
- Defects or damages caused by improper service or maintenance, the use of parts other than genuine Cirrus parts or modifications made to the cleaner without our prior written approval.
- Damage that occurs during shipment.
- Vacuums purchased outside the United States.
- Domestic vacuums subject to commercial or rental use.

*What we will do:*

The manufacturer will, at its option, repair or replace a defective vacuum or vacuum cleaner part that is covered by this limited warranty. As a matter of warranty policy, Cirrus Vacuum will not refund the consumer's purchase price.